

Inspiring Perfection...
Concerning Energy....

Mfg. By :
NIK MOTORS PVT. LTD.,

Plot No.70, Virani Aghat,
B/h. Kamnath Weigh Bridge, Dhebar Road (South)
Rajkot, (guj.) India

Customer Care No. : +91 99248 00020

Email : info@nikmotors.in | Website : www.nikmotors.in

AC
INDUCTION MOTOR

www.nikmotors.in



AC INDUCTION MOTOR

Company Profile :

Nik motor PVL LTD is a leading name in the field of manufacture of varied range of Electric motors including, A.C Motors, Gear Motors, Based at Rajkot, Gujarat, Nik Motors has grown by leaps and bounds, from the time of its modest inception to become the most preferred choice of customers, cutting across a range of industries. Known for its stringent commitment to quality, Nik Motors boasts of a world-class production unit, which incorporates the latest in technology to ensure, quality products, which always meet or exceed customer's expectations. Manned by the finest talents in the industry, our phenomenal growth has been enabled by our collective vision of always ensuring 'customer's delight'. Our passion towards attaining global benchmarks in production standards has been instrumental in our remarkable growth, over a relatively short span of time. It is with this confidence that we are confidently marching ahead in our journey, towards attaining undisputed leadership, in this highly specialized and competitive field.

Mission :

"We aim to produce truly world-class and reliable products, benchmarking our standards against the best available in the international market. We will constantly strive for up gradation of technology, and intellectual property, to always ensure customer's delight."

Quality Assurance :

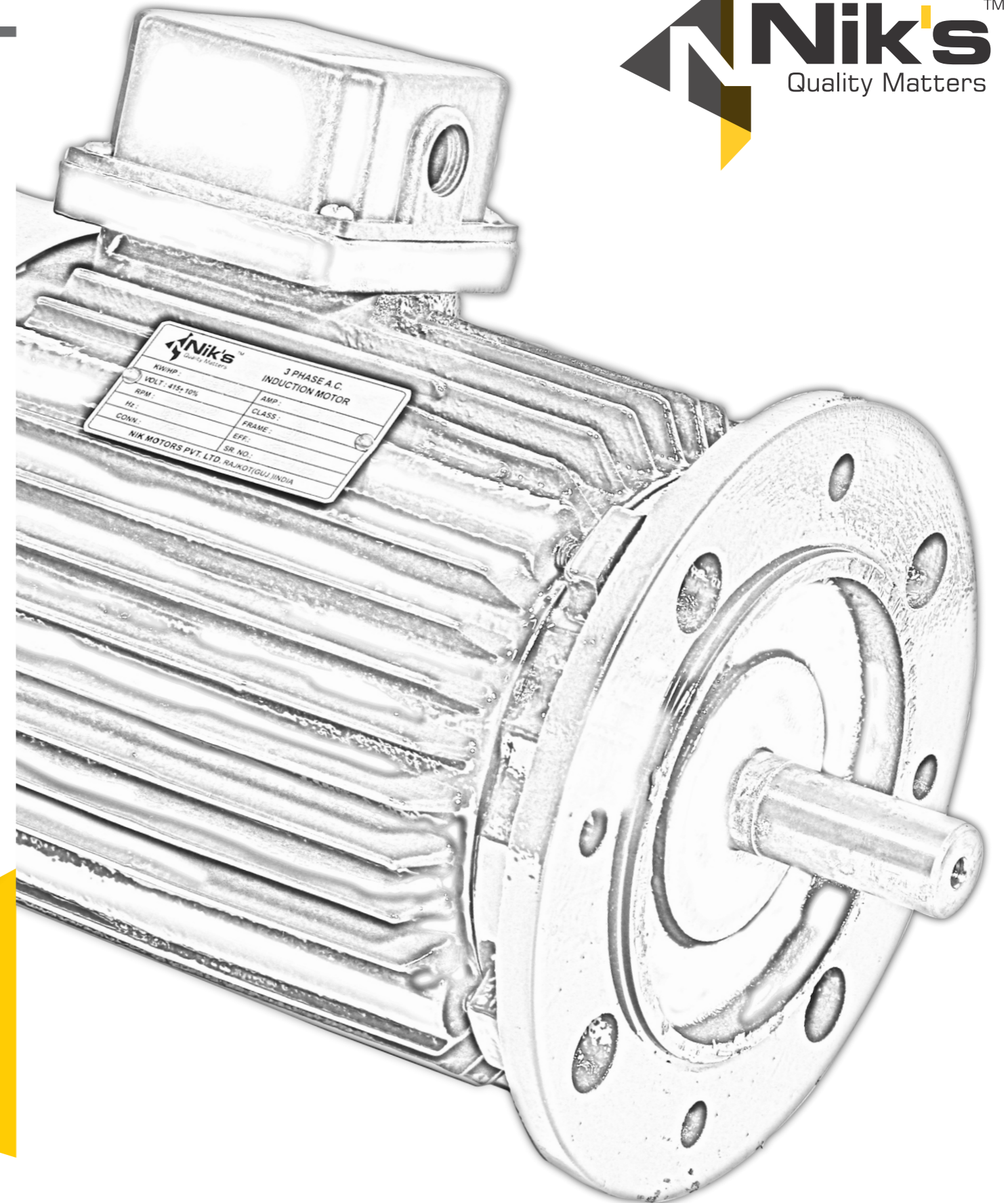
Every one of our products is put through a series of stringent quality checks, before the final delivery. We have a full-fledged, in-house, quality control team, which constantly monitors every stage of production. Equipped with the latest testing equipments, our team ensures flawless products.

We are famed for our adherence to international standards of quality. It is this commitment, which has seen us grow remarkably, to become the undisputed choice of hundreds of satisfied customers.

Quality has been and will be our hallmark. Every product of Nik Motors vouches for its quality, reliability and durability

Values :

- Customer-centric focus
- Constant investment in latest technology
- Excellent work atmosphere
- Ensuring quicker turnaround times





AC INDUCTION MOTOR

STANDARD SPECIFICATION

Frame	: 70 To 160L
Rated Power	: 0.37kw To 10.0kw (0.5 Hp To 15 Hp)
Rated Speed	: 3000, 1500,1000, RPM
Frequency Variation	: 50Hz Or 60Hz ($\pm 5\%$)
Voltage Variation	: 415V Or 230V ($\pm 10\%$)
Mounting	: Foot Type, Flange Type, Foot Cum Flange
Enclosure	: TEFC (Total Enclose Fan Cooled)
Insulation Class	: Class 'B' Class 'F'
Cooling Method	: IC 411 (Shaft Mounted Fan)

CONTENTS OF TEST PROGRAMS

Routing Test

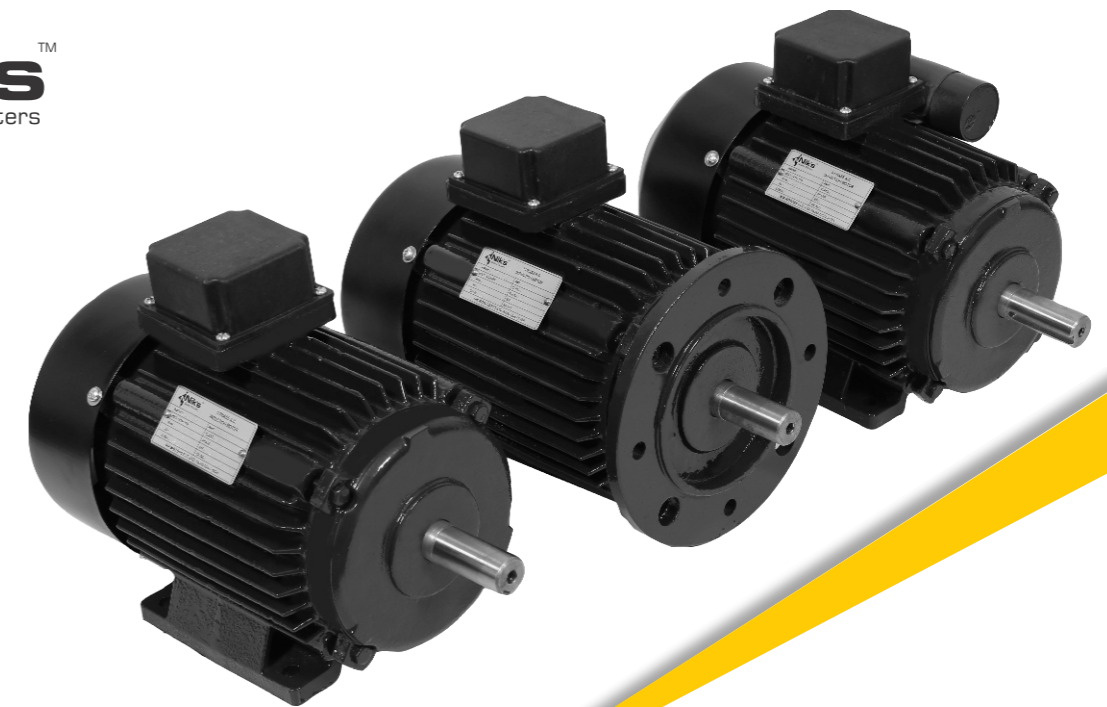
1. Insulation Resistance Test
2. Measurement Of The Stator Resistance
3. Locked Rotor Test
4. No Load Test
5. Reduced Voltage Running Test
6. High Voltage Test

Optional Test

1. Vibration Severity Test
2. Sound Level Measurement
3. Temp. Rise Test
4. Test On Insulations System

Type Tests

1. Dimensions
2. Measurement Of The Stator Resistance
3. Locked Rotor Test
4. Temperature Rise Test
5. Full Load Test
6. No Load Test At Rated Voltage
7. Reduced Voltage Running Test
8. Momentary Overload Test
9. Insulation Resistance Test
10. High Voltage Test



▶ 3 - PHASE
LEG MOUNTED



▶ 3 - PHASE
FLANGE MOUNTED

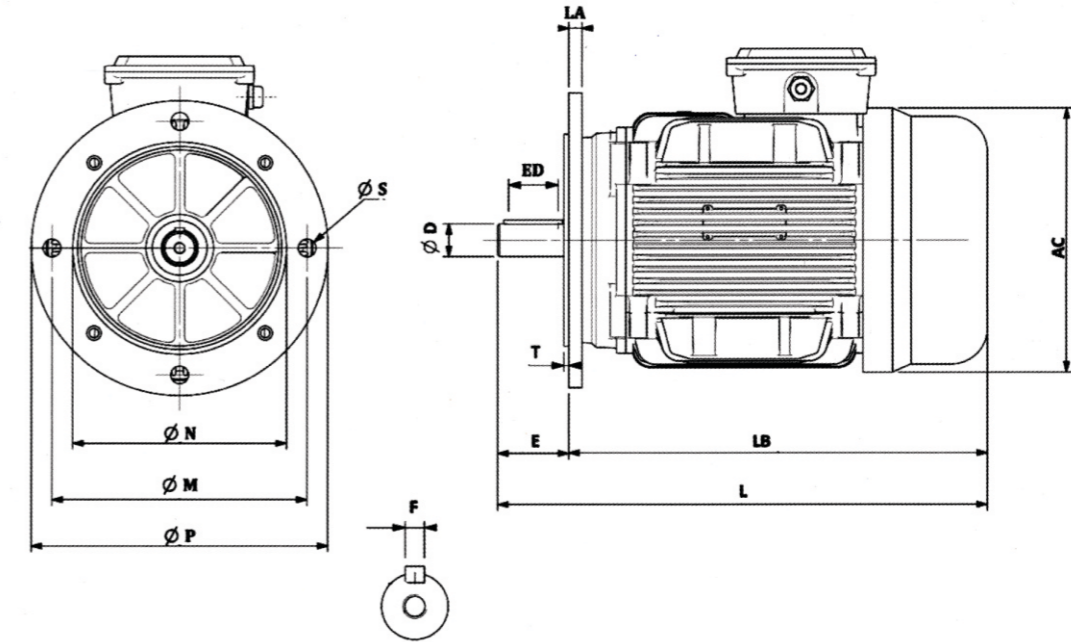
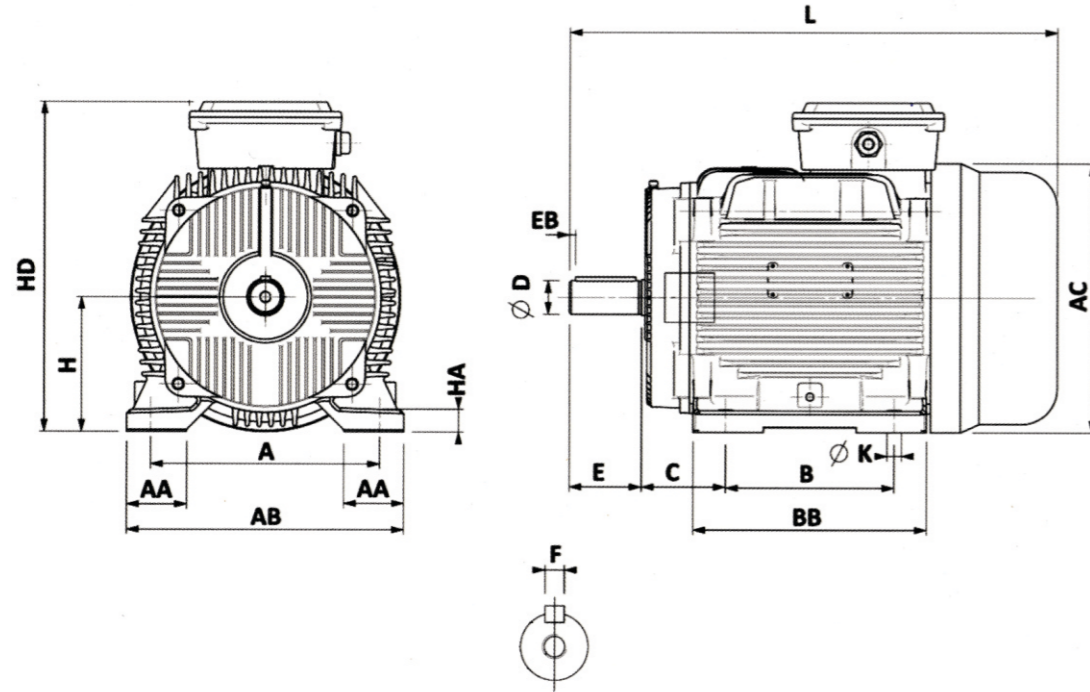


▶ 1 - PHASE
LEG MOUNTED



Foot Mounted Outline Dimensions

Foot Mounted Outline Dimensions



FRAME SIZE :	71	80	90S	90L	100L	112M	132S	132M	160M	160L
H	71	80	90	90	100	112	132	132	160	160
A	112	125	140	140	160	190	216	216	254	254
B	90	100	100	125	140	140	140	178	210	254
C	45	50	56	56	63	70	89	89	108	108
D	14	19	24	24	28	28	38	38	42	42
E	30	40	50	50	60	60	80	80	110	110
F	5	6	8	8	8	8	10	10	12	12
AA	29	33	40	34	45	50	68	68	72	72
AB	132	156	175	175	200	230	256	256	308	308
BB	120	144	140	175	194	194	194	222	250	288
K	7	10	10	10	12	12	12	12	15	15
HD	175	201	215	220	252	274	324	324	390	390
HA	8	12	12	15	15	18	18	18	20	20
L	256	289	308	340	383	400	480	518	646	690
AC	138	158	175	175	199	222	256	256	303	303

FRAME SIZE :	71	80	90L	100L	112M	132S	132M	160M	160L
N	110	130	130	180	180	230	230	250	250
M	130	165	165	215	215	265	265	300	300
P	160	200	200	250	250	300	300	350	350
D	14	19	24	28	28	38	38	42	42
E	30	40	50	60	60	80	80	110	110
ED	25	30	40	50	50	70	70	110	100
F	5	6	8	8	8	10	10	12	12
LA	9	10	10	11	11	12	12	13	13
T	3.5	3.5	3.5	4	4	4	4	5	5
S	10	12	12	15	15	15	15	19	19
L	268	303	350	397	408	492	530	658	702
LB	238	263	300	337	348	412	450	548	592
AC	138	158	175	199	222	256	256	303	303